

INTERNATIONAL STYLE A

别墅设计360°

异域风情

ThinkArchit工作室 主编

外观
Exterior

室内
Interior

平面图
Plan

剖面图
Section

华中科技大学出版社
<http://www.hustp.com>

Architecture + Design



Riverhouse Niagara

Architecture Design / 建筑设计 : ZERAF A ARCHITECTURE STUDIO Design Team / 设计团队 : Jason Zerafa, Joaquin Boldrini
 Location / 地点 : Canada Area / 面积 : site 7,400 m² / gross floor 500 m² Photography / 摄影 : Tom Arban



The house is comprised of three distinct horizontal volumes, each with a specific material quality. The building's north south massing is defined by 2 overlaid rectangular shells. The shell exteriors are clad in silver metal panel and are mostly opaque to provide privacy from adjacent properties to the north and south. The long open east and west ends of the shells reveal the River and garden views through expansive glazed walls. The exposed return surfaces of the shells are lined with western red cedar to provide a calm transitional space between the interior and exterior.

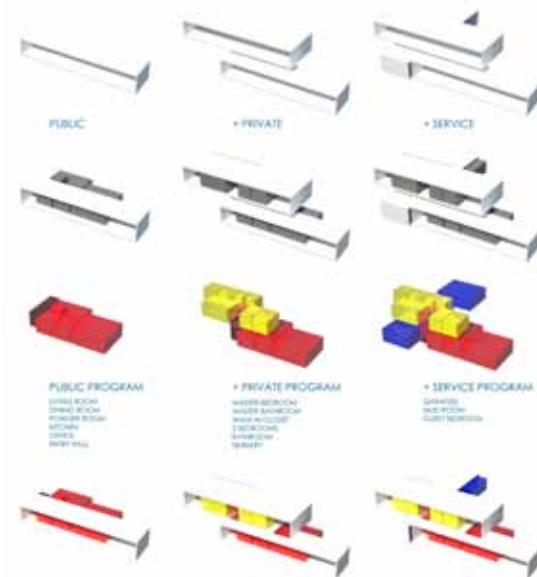
The service and ancillary spaces, garage, storage, guest suite and access to the basement level are contained within a single-story bar that runs east to west to minimize the obstruction of views.

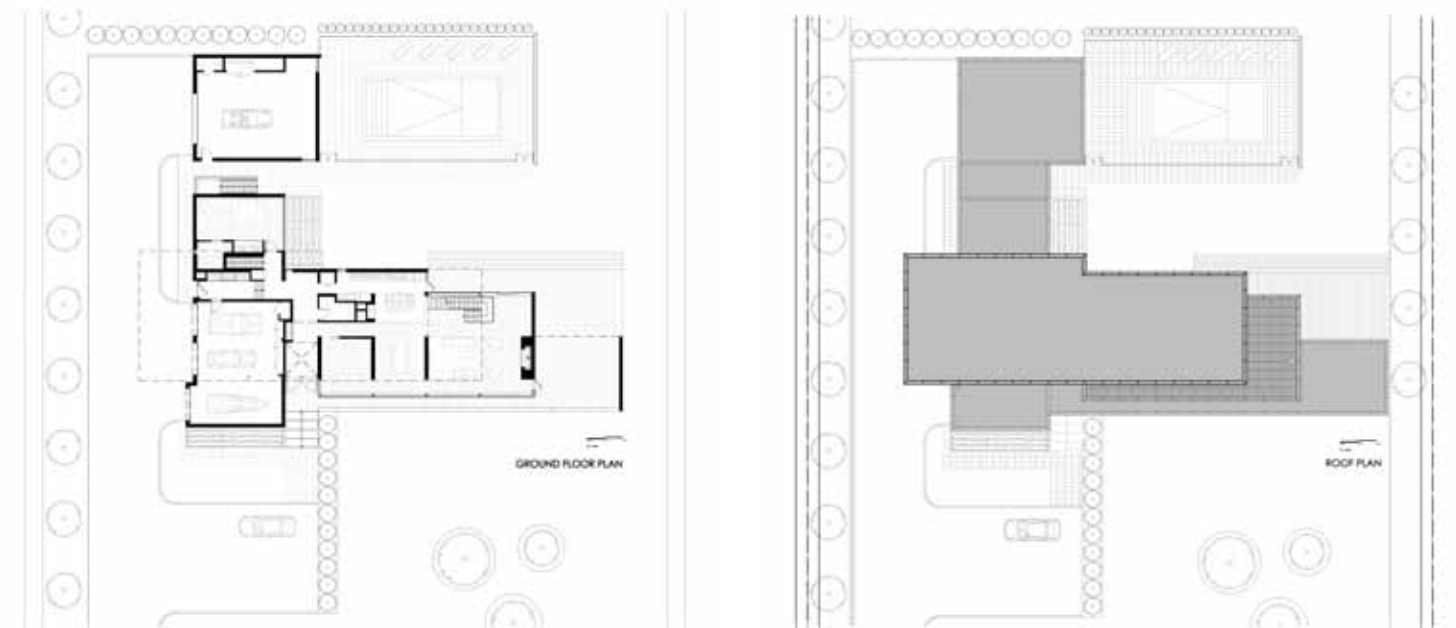
The primary living spaces are distributed in a linear bar across the width of the site to maximize exposure to river views. The home office, kitchen/dining room and double height living room extend the full width of the north south bar to mediate the front and rear gardens and establish a strong visual connection to the outdoors. The more private spaces including an expansive master suite, two additional bedrooms with en-suite bath and laundry facilities are distributed in a parallel bar on the second floor accessible by a dramatic sculptural stair.

这座房子由3组水平结构组成——使用的材料各不相同。建筑南北向部分是两层矩形结构，其外部覆有近乎不透明的银色金属板，这样的外观确保了建筑的私密性。建筑东西两侧的玻璃幕墙结构使人们可以欣赏到河流和花园的美景。建筑外墙的红杉木装饰使内外环境和谐过渡。

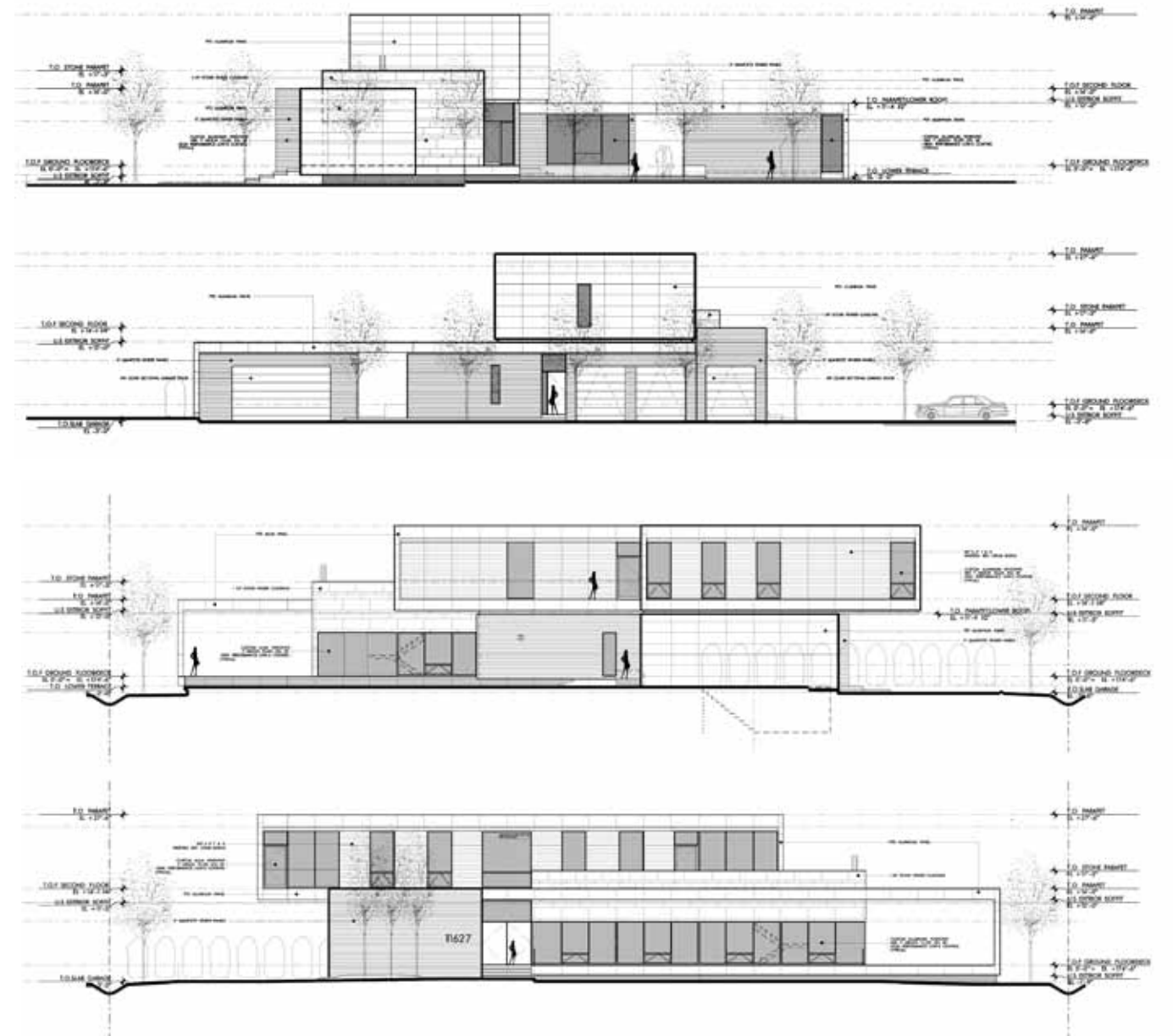
服务区和辅助空间，如车库、仓库、客房、地下室入口等，均位于一处东西向的长条形单层空间内，这种设计可以最大限度地扩大景观视野。

主要的生活空间分布在长条形的建筑空间。家庭办公室、厨房、餐厅以及双层高的起居室占据了建筑南北向的条形空间，人们在这里可以欣赏到建筑前面和后花园的美景。二层的空间私密性更强，这个楼层设置有一处宽敞的主人套房、两间次卧及配套的浴室、洗衣房等设施。





Plan/ 平面图



Elevation/ 立面图

